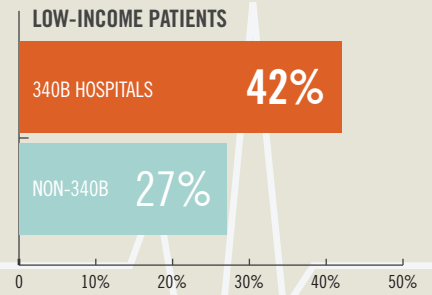


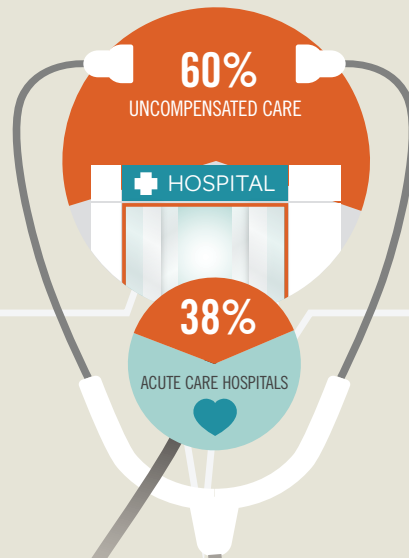
# 340B HOSPITALS ARE VITAL SAFETY-NET HEALTHCARE PROVIDERS

**340B hospitals treat significantly more low-income patients**



Low-income patients make up 42% of 340B DSH hospitals' patient load versus 27% for non-340B hospitals.

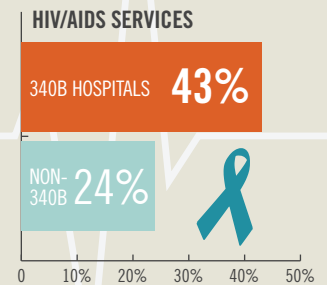
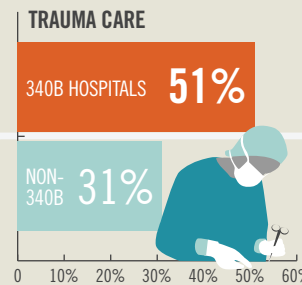
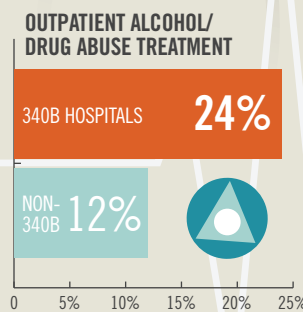
**340B hospitals provide more uncompensated and unreimbursed care**



340B DSH Hospitals represent only 38% of acute care hospitals, yet are responsible for 60% of the nation's uncompensated and unreimbursed care—more than \$26 billion.

**340B hospitals provide more services critical to low-income patients**

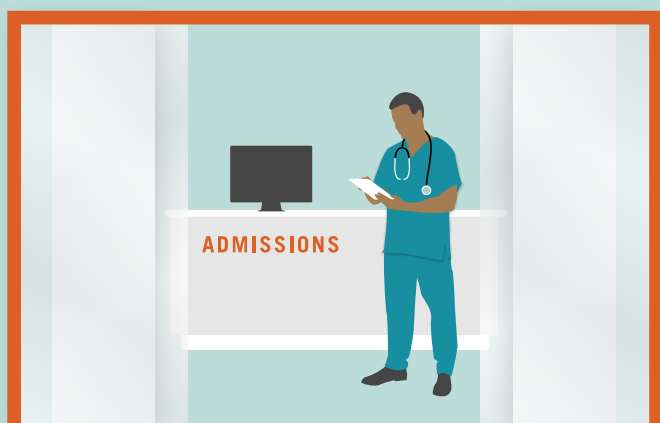
340B DSH hospitals are more likely to offer services that are critical to low-income patients but often underpaid.



# 340B SAVINGS SUPPORT PATIENT CARE

Hospitals unanimously report using 340B savings to care for low-income and rural patients

## RURAL HOSPITALS



74%

of rural hospitals say 340B savings are the difference between staying open and closing their doors

## DSH HOSPITALS



95%

of DSH hospitals use 340B savings to provide uncompensated care

80%

of DSH hospitals use 340B savings to offset low Medicaid reimbursements

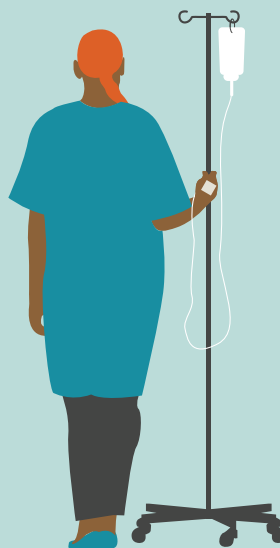
## IF 340B SAVINGS ARE REDUCED ...

75%

of DSH hospitals say they would have to cut back on uncompensated care

71%

of hospitals said they would have to cut back on oncology services



Results based on survey of 340B Health members conducted in November-December 2017.